



# **Seascape Characterisation: Forth and Tay marine region**

**Dr Tim Stojanovic**

**Department of Geography and Sustainable Development, University of St Andrews  
(with Prof Rob Duck, Dr Ruth Falconer, Dr Dan Gilmour  
Vlad Stojanovic and Mark Jackson)**

**Tay Estuary Forum Annual Conference 22 April 2016**



# Policy Background

# Forth and Tay Scottish marine region



# Terminology

- **Seascape Characterisation**
  - process of identifying and describing variation in the character of the seascape, and using this information to assist in managing change in the seascape.
- **Seascape Sensitivity/Assessment**
  - The ability of a seascape to respond to and accommodate change. It reflects seascape character, the nature of change and the way both are perceived and experienced.
- **Seascape Visual Impact Assessment**
  - established methodology which is used to assess the impacts of a development or other land use change on visual amenity.

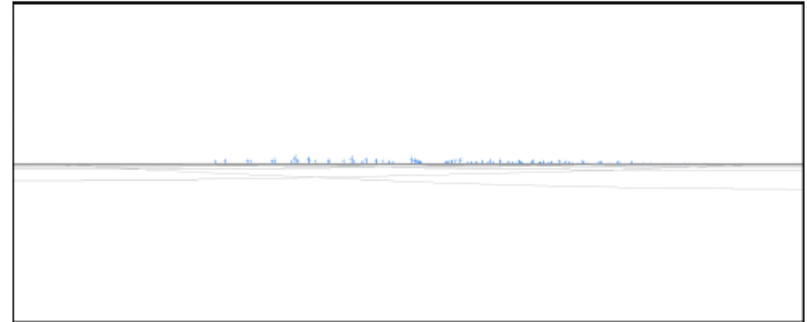


Figure 12b: Viewpoint 2 Worst Case Scenario - Maximum Height for 10+MW Turbines

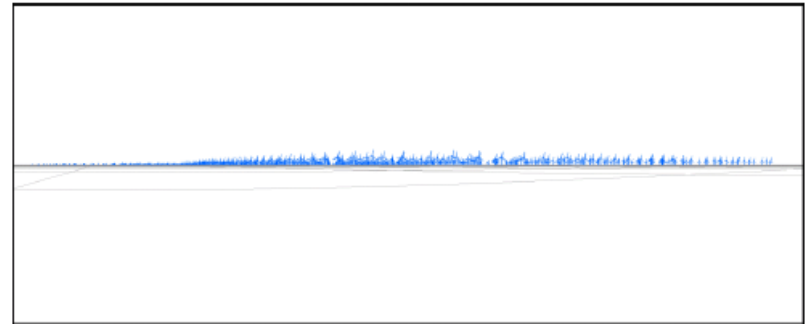


Figure 13a: Viewpoint 3 Worst Case Scenario - Maximum Density for 6MW Turbines

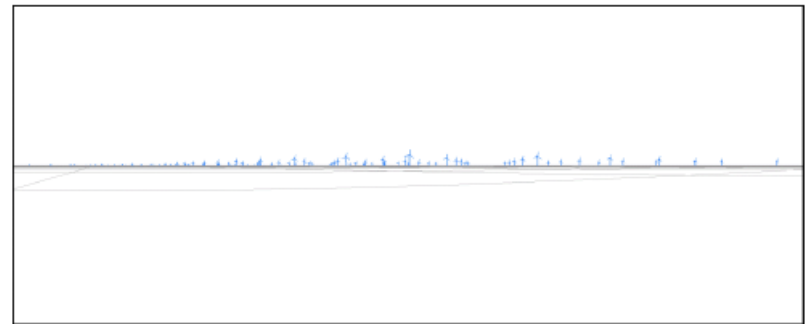
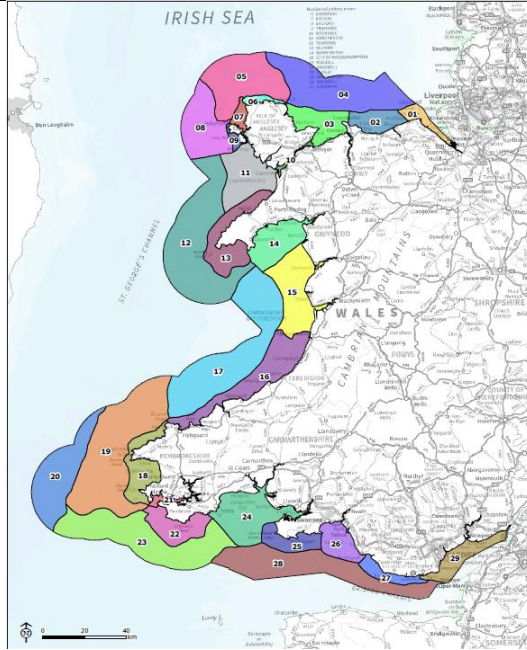


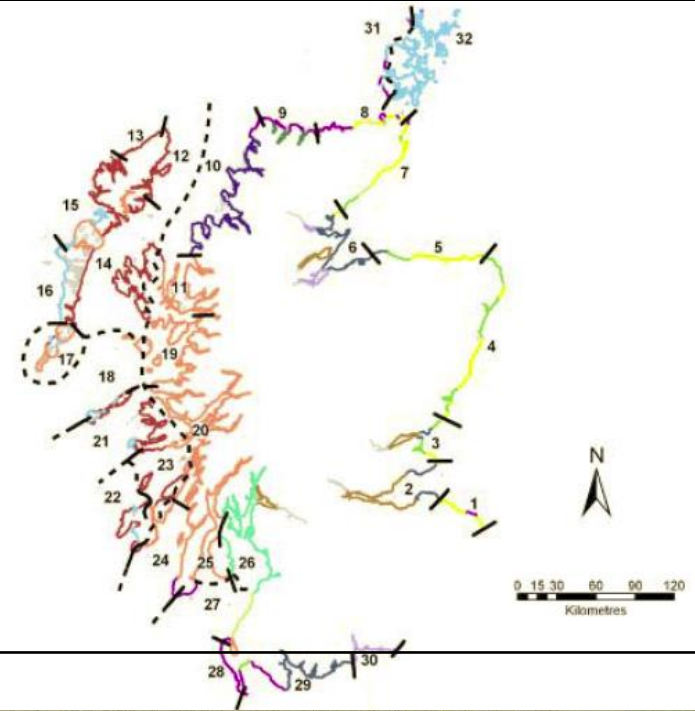
Figure 13b: Viewpoint 3 Worst Case Scenario - Maximum Height for 10+MW Turbines

# UK Policy Context

## Wales



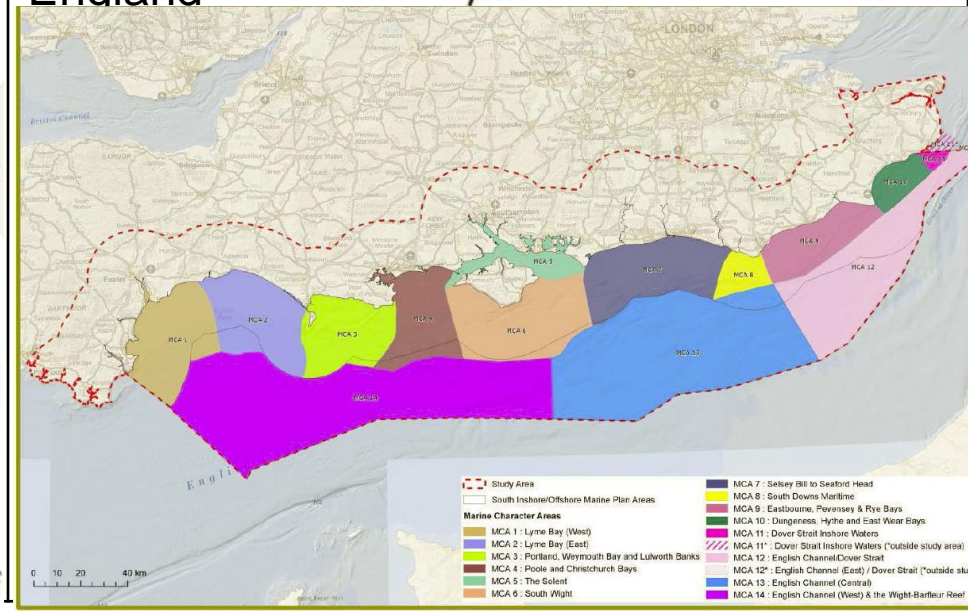
## Scotland



## Northern Ireland



## England



# SNH 2016 consultation on ‘Coastal Character Assessment’

Guidance on Coastal Character Assessment –  
Consultation Draft

Carol Anderson Landscape Associates for  
Scottish Natural Heritage

February 2016

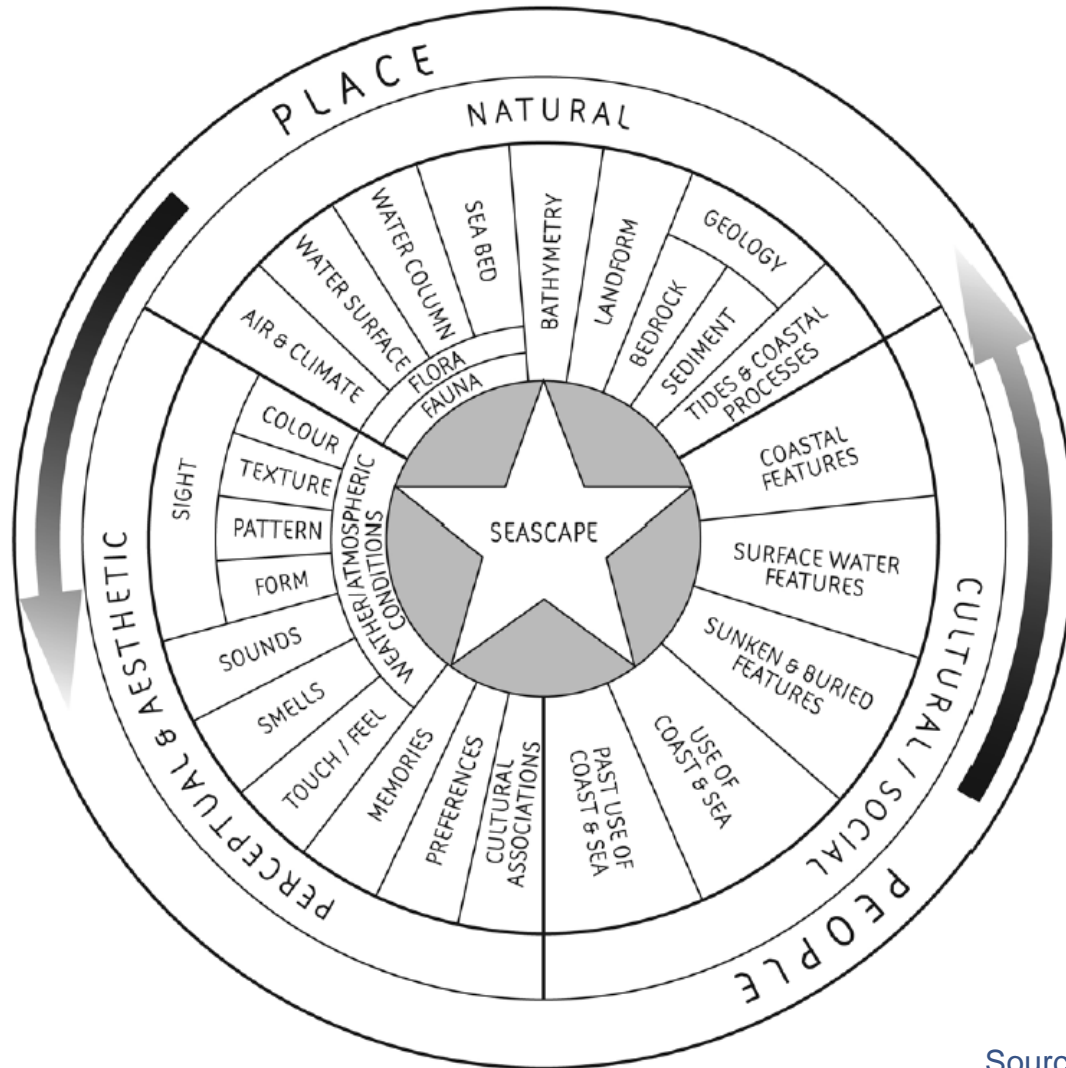


Scottish Natural Heritage  
Dualchas Nàdair na h-Alba

All of nature for all of Scotland  
Nàdair air fad airson Alba air fad



# The Seascape Wheel





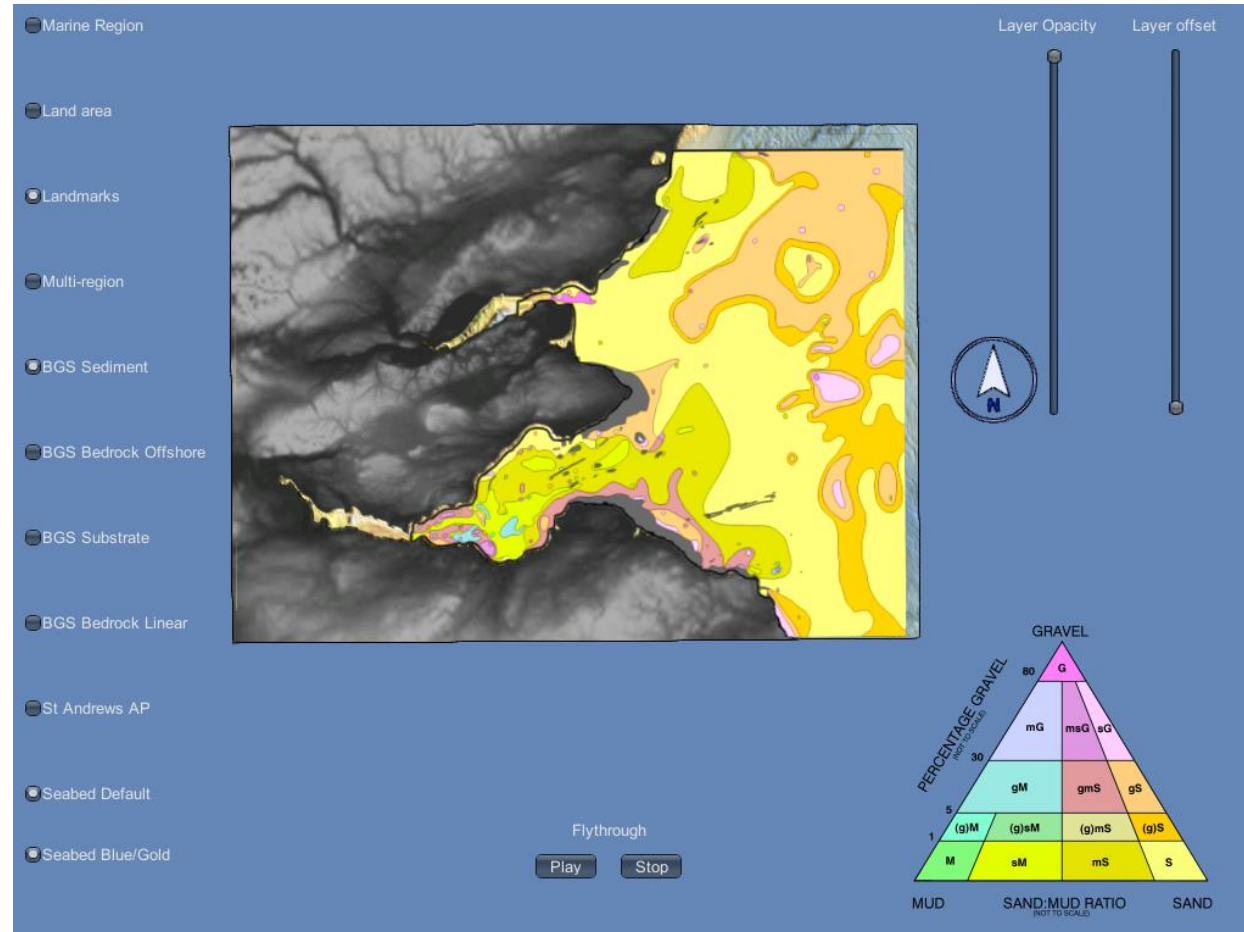
# Forth and Tay Characterisation

# Seascape Characterisation

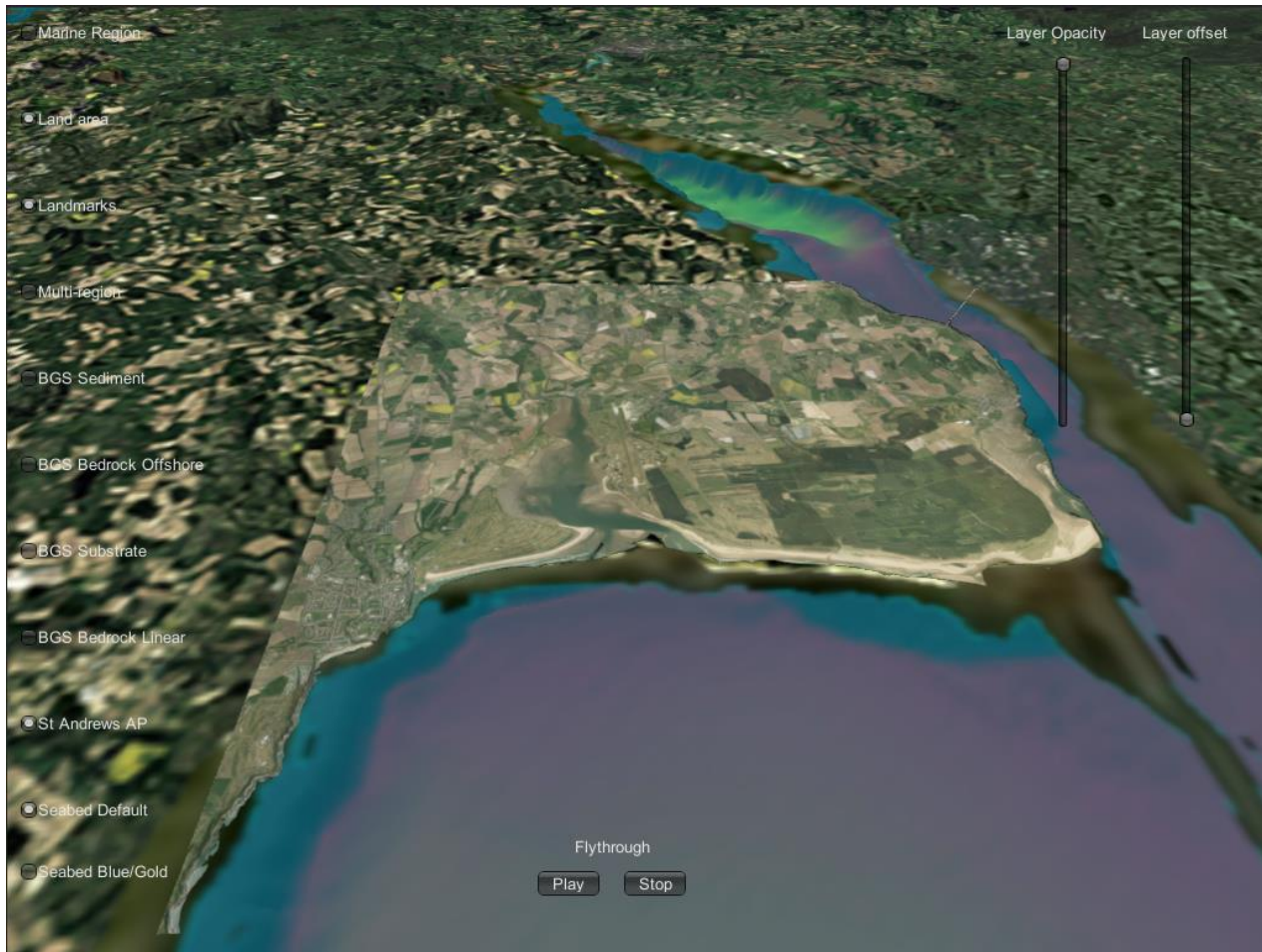


# Natural Features and Characteristics

- Geological
- Seabed
- Physiological
- Ecological
  - Coastal
  - Water column
- Human Infrastructure



# Visualisation



# Findings

# Findings:

## 1. Purpose and Content

- Seascape as visual and physical conjunction of land and sea which combines maritime, coast and hinterland character
- Seascape as a way of summarising social & cultural significance of marine regions

## 2. Biophysical Components and Natural Features

## 3. Expertise and Participation

## 4. Scale and Extent

## 5. Consistency and Coordination

## 6. Bureaucracy and Complexity

## 7. Objectivity and Analysis

## 8. Politics and Values

# The Way Forward?

- **Develop a standard but flexible approach which supports the goals of regional marine planning**
- **Review the pros and cons of extending seascape characterisation offshore or below the waterline**
- **Improve consideration of physical characteristics and features**
- **Involve a broader range of knowledge holders**
- **Capitalise on seascape as a way to engage the public in marine planning**
- **Integrate seascape more into the Marine Planning process**