

Inch Cape Offshore Limited

Tom Young
Offshore Environment and Consents Manager
tom.young@redrockpower.co.uk

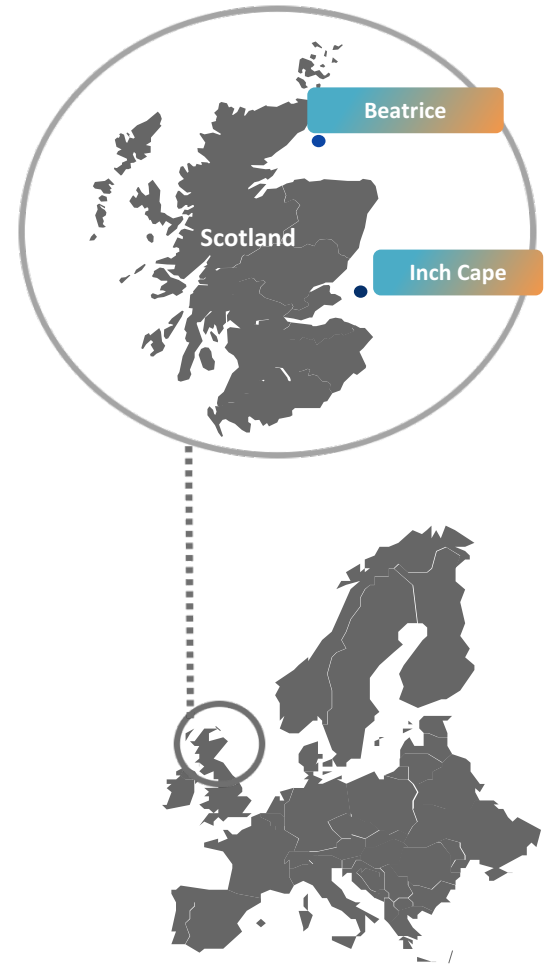


Forth and Tay Estuary Forum

- Introduction
- Overview of the Inch Cape Project
- Location and key features
- Onshore Development Update
- Next steps

Red Rock Power Limited

- Red Rock Power Limited is a renewable energy business based in Edinburgh established to develop, own and operate clean energy projects.
- Red Rock Power Limited has a stake in two offshore wind projects in Scotland: 100% share of Inch Cape Offshore Wind Farm and 25% share of the Beatrice Offshore Wind Farm, led by SSE.



Inch Cape Overview



Original Development

- Consent for 110 turbines granted in October 2014.
- Judicial Review by RSPB removed consent in July 2016 through the Outer House.
- Appeal reinstated consent in May 2017 through the Inner House.
- RSPB are seeking to appeal to Supreme court.

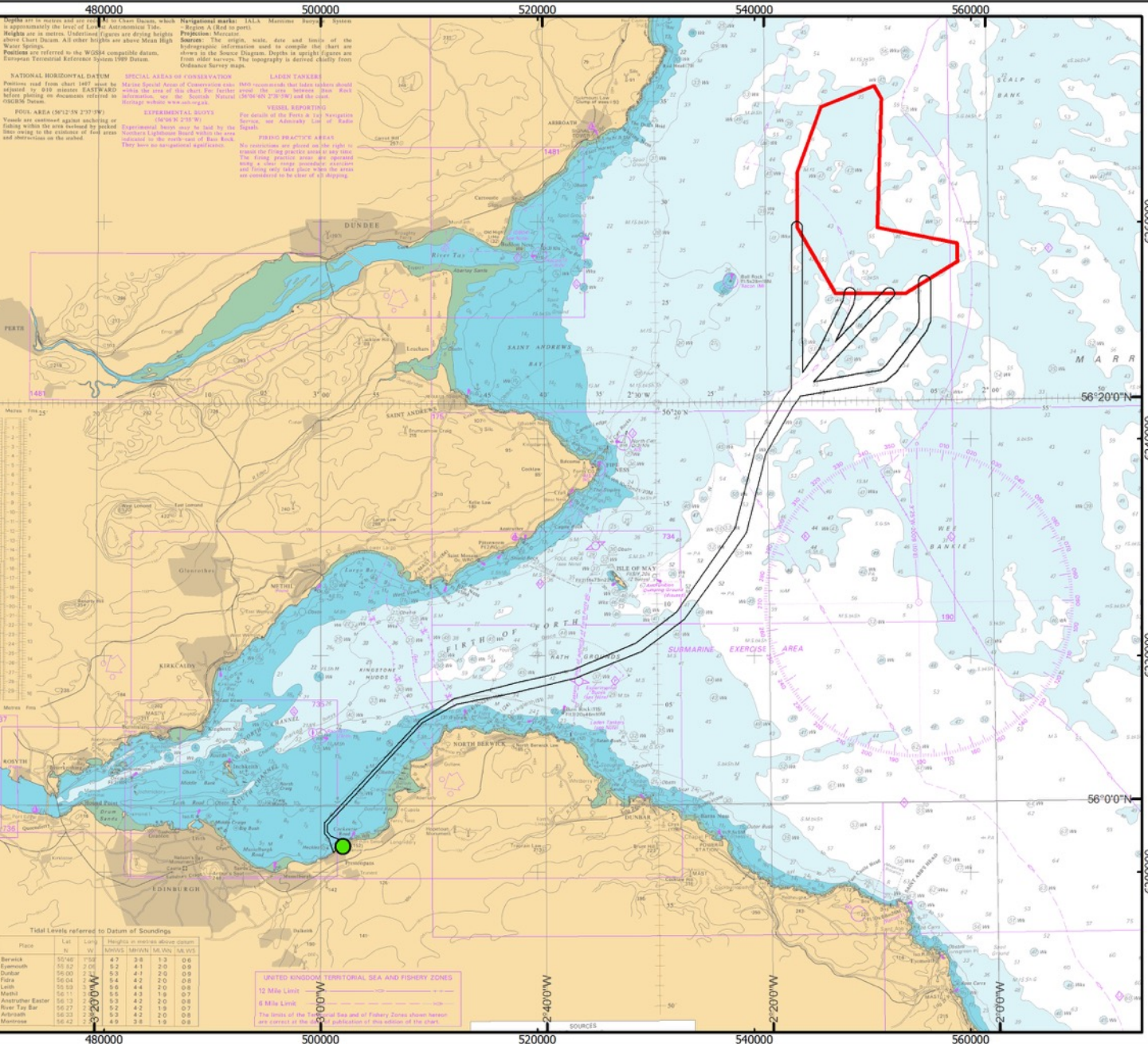
Inch Cape Overview

Original Development

- Consent for 110 turbines granted in October 2014.
- Judicial Review by RSPB removed consent in July 2016 through the Outer House.
- Appeal reinstated consent in May 2017 through the Inner House.
- Potential appeal to Supreme court by RSPB.

New Development

- Take advantage of turbine changes ICOL pursuing a New Development in same location.
- First step, scoping submitted in April 2017, with intention to submit EIA Report early 2018.
- Inch Cape will pursue either the Original or the New Development.



Inch Cape
Offshore
Limited

- KEY**
- Grid Connection
 - Development Area
 - Offshore Export Cable Corridor

Horizontal Scale: 1:500,000 A4 Chart N

0 10 20 Km

Geodetic Parameters: WGS84 UTM Zone 30N

Produced: DB
Reviewed: AB
Approved: TY

Date: 15/08/2017 Revision: 1

REF: int0239_1_R1

Development Area
and Offshore Export
Cable Corridor

Inch Cape
Wind Farm

New Development - Key Features

Parameter	Original	New
Max number of turbines	110	72
Turbine spacing minimum (m)	820	1278
Max tip height (m)	215	301
Met masts	2	0
Offshore substation platforms	5	2
Inter-array cabling length (km)	353	190
Export Cable Length (km)	83	83
Number of Export Cables	6	2

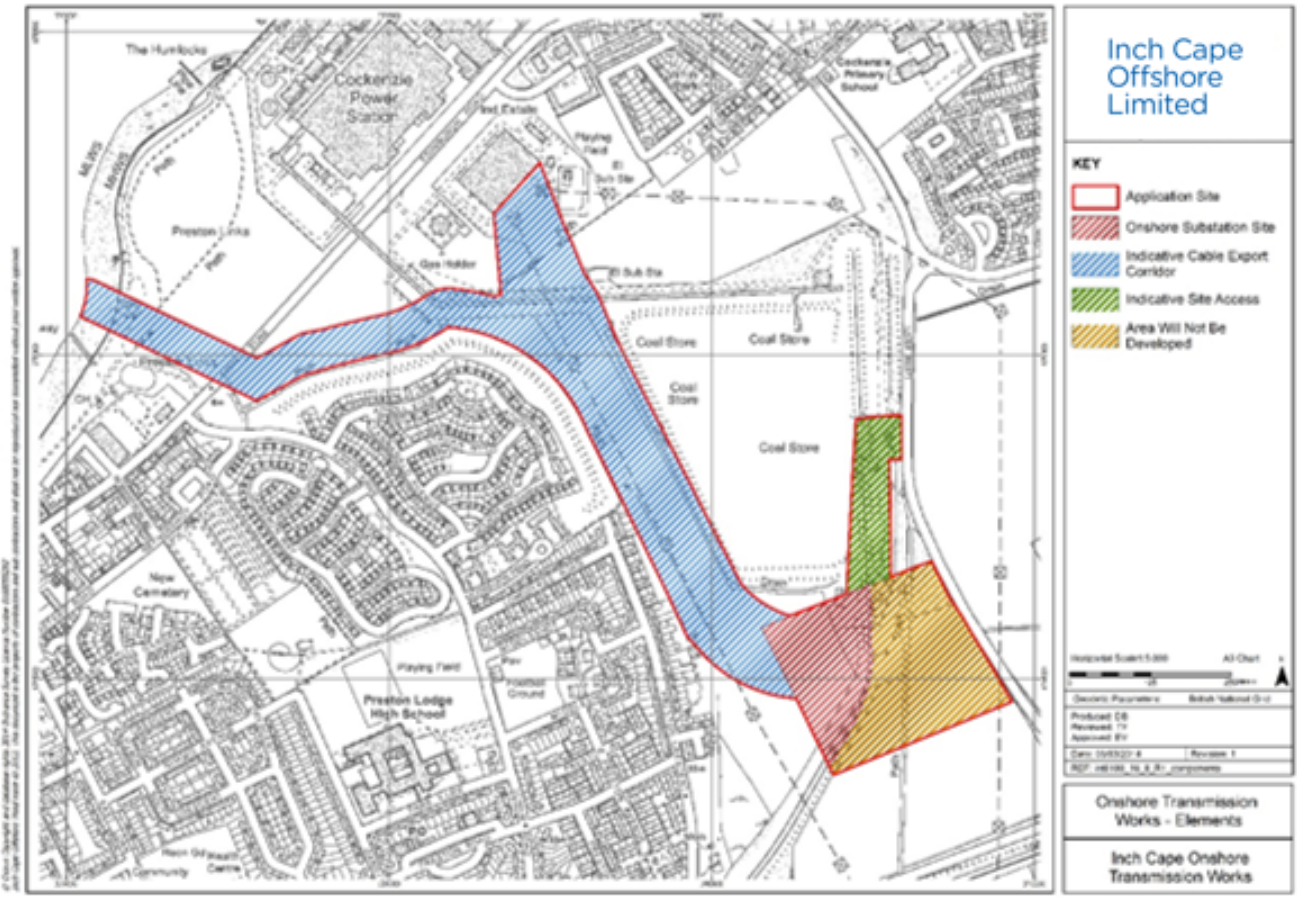
- The Development Area for both the consented and new application remains the same.
- Export cable the same but only one landfall location considered, previously two.
- Electricity for the equivalent of over half a million households, based on average UK household consumption.
- Creating around 1,200 jobs in Scotland and up to £378 million of added value to the Scottish economy during construction.

New Development - Key Features

Compared to the Original Development this means:

- Reduction in area of seabed lost during operation of 44%;
- Reduction in area of seabed lost during construction of 23%;
- Construction time now over 2 years, reduction in construction time by a year;
- Reduction in vessel movements during construction by 2000 (from an estimated 3500 to 1500);
- Limited additional areas with predicted visibility;
- Potential for more significant effects within areas of predicted visibility due to height increase of WTGs;
- Potential requirement for a more powerful piling hammer during construction.

Onshore 2014 Planning Permission in Principle



- Inch Cape was granted planning permission in principle for the onshore site in September 2014. This expires in September 2017.
- In November 2016 ICOL began the process of renewal of the PPP.
- Feedback from consultation events indicated that there has been an increase in opposition to the site in its original application, from members of the community as well as ELC.

New Substation Location



© Crown Copyright and database rights 2014 Ordnance Survey Licence Number 0100050322
 Inch Cape Offshore Limited © 2017. This document is the property of contractors and sub-contractors and shall not be reproduced nor transmitted without prior written approval.

Inch Cape
Offshore
Limited

KEY

 Planning Boundary

Horizontal Scale 1:3,000 A4 Chart 



Geodetic Parameters: British National Grid

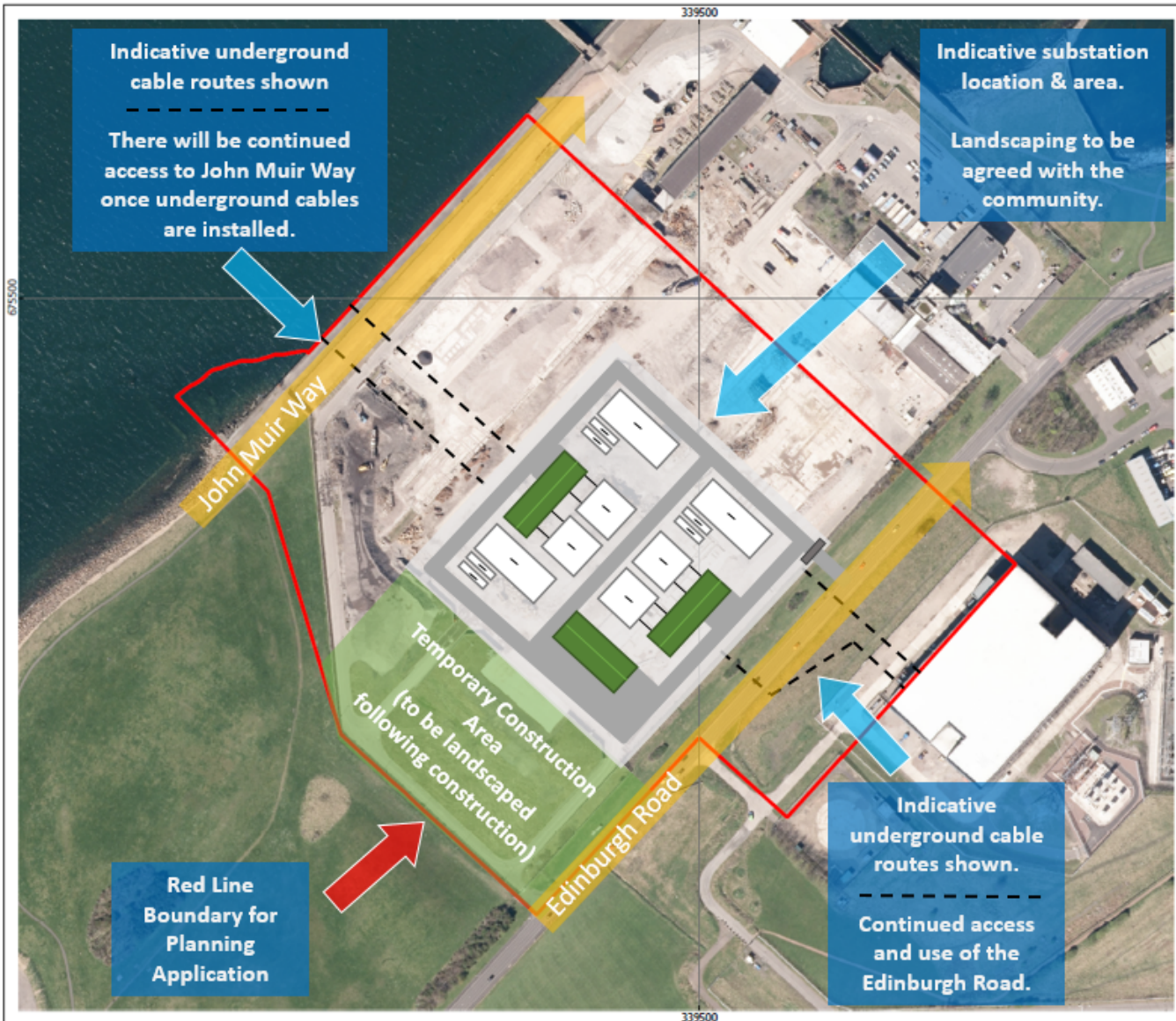
Produced: DB
 Reviewed:
 Approved:

Date: 26/04/2017 Revision: 3
 REF: INT0057_49_1_R3

Onshore Transmission Works

Inch Cape Onshore
Transmission Works

New Application Indicative Layout



© Crown Copyright and database rights 2014 Ordnance Survey Licence Number 0100050322. This document is the property of contractors and shall not be reproduced nor transmitted without prior written approval.

New Development – Next steps

ICOL will progress one or other of the offshore developments, not both.

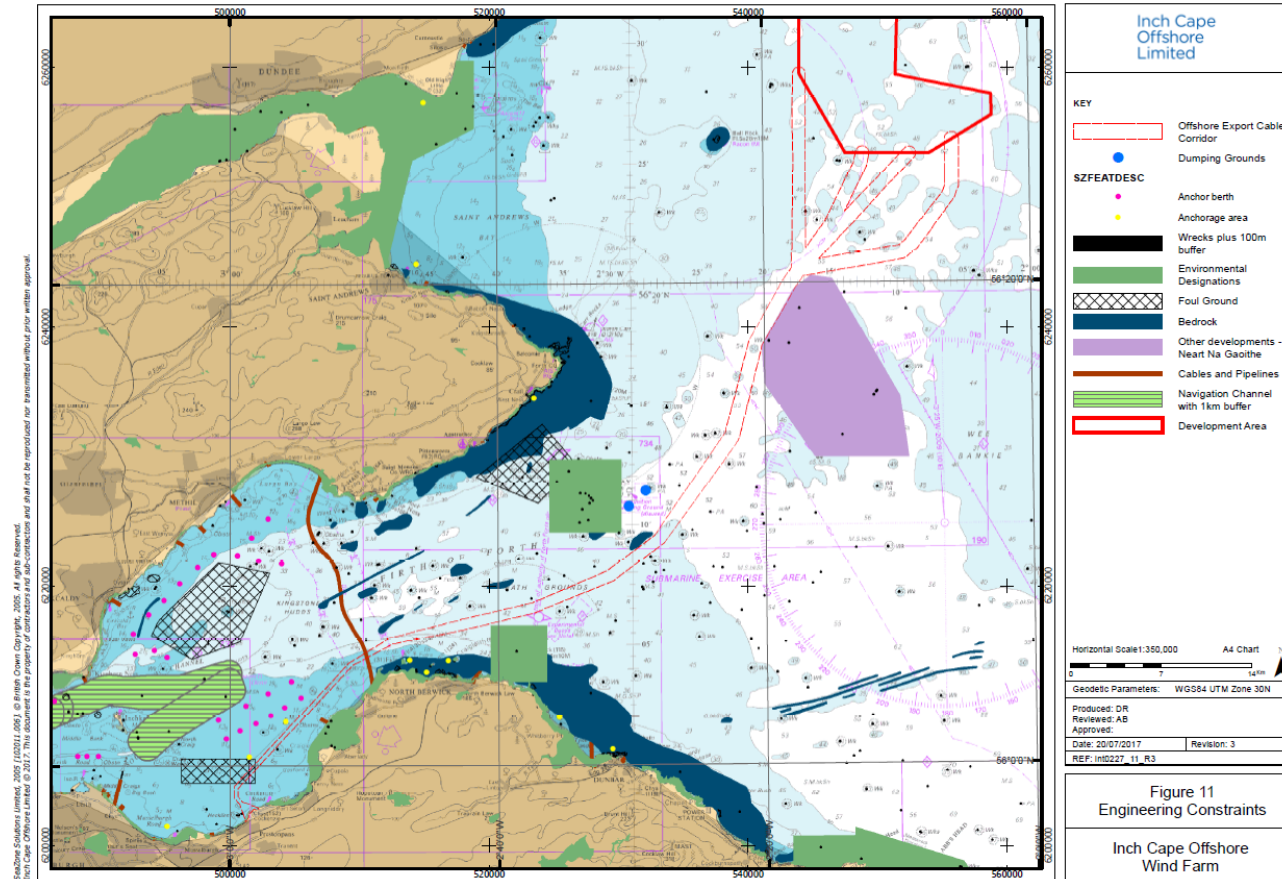
- Keep learning about the site.

Offshore

- Preparation of EIA for New Development.
- Submission of EIA and application in 2018

Onshore

- Preparation of EIA for the new substation location
- Submission of EIA and application later this year





Thank you

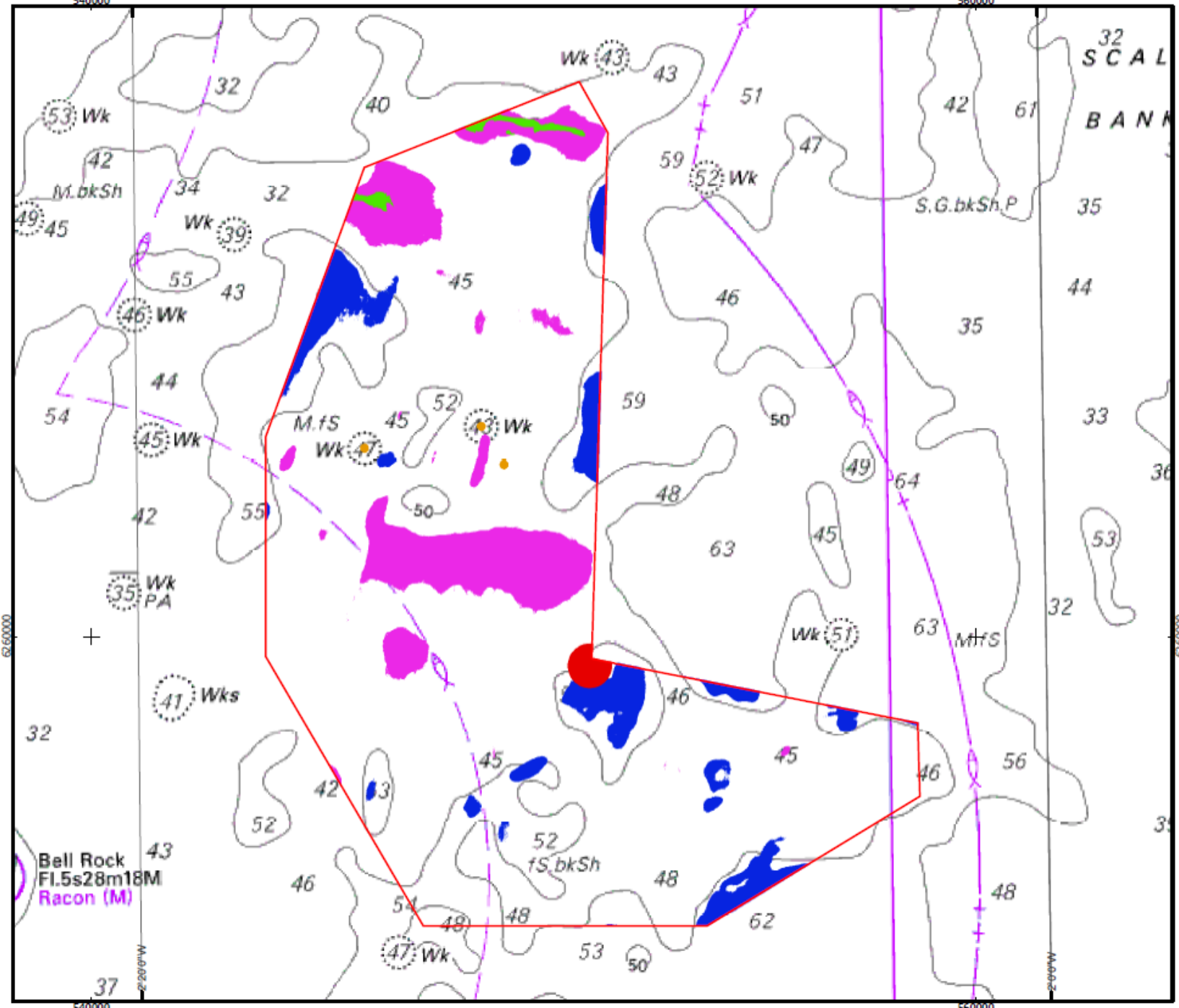
Tom Young

Offshore Environment and Consents Manager

tom.young@redrockpower.co.uk

Inch Cape
Offshore
Limited

Inch Cape Offshore Limited © 2017. This document is the property of contractors and sub-contractors and shall not be reproduced nor transmitted without prior written approval.



- KEY**
- Inch Cape B
 - UXO
 - Marine Arch
 - Sand Waves
 - Depth > -45.
 - Depth < -53.

Horizontal Scale 1:120,000

0 2.5

Geodetic Parameters: WGS84

Produced: DR
Reviewed: AB
Approved:

Date: 30/08/2017 Rev

REF: Int_0243_physical_constraints

Constraints M
Physical Cons

Inch Cape
Wind Fan